



# 70-400 SERIES SINGLE UNION END SOLDER BRONZE BALL VALVE

<b>Job Name:</b>	<b>Contractor:</b>
<b>Job Location:</b>	<b>P.O. Number:</b>
<b>Engineer:</b>	<b>Representative:</b>
<b>Tag:</b>	<b>Wholesale Distributor:</b>

## DESCRIPTION

The Apollo® 70-400 Series is a standard port ball valve that is designed to be soft soldered in to lines without disassembly. Manufactured with proven ASTM Materials in the USA.

## FEATURES

- Adjustable Packing Gland
- Blow-Out Proof Stem Design
- RPTFE Seats and Stuffing Box Ring

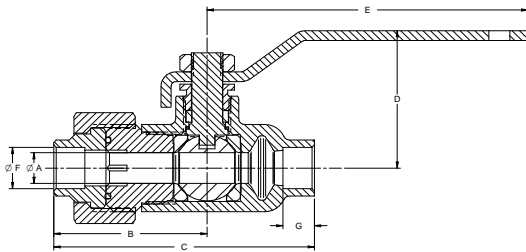
## PERFORMANCE RATING

- Maximum Pressure: 600 psi CWP, 150 psi SWP
- Maximum Temperature: 500°F
- Vacuum Service to 29 in. Hg

## STANDARD MATERIALS LIST

Part Name	Material
Lever and Grip	Steel, Zinc Plated w/ Vinyl Coating
Stem Packing / Bearing	RPTFE
Ball	B16 Brass, Chrome Plated
Seat (2)	RPTFE
Retainer	B16 Brass or B584-C84400 Bronze
Gland Nut & Stem	B16 Brass
Lever Nut	Steel, Zinc Plated
Body Seal (1 1/4" to 2")	PTFE
Body	B584-C84400 Bronze
Tailpiece & Nut	B16 or B584-C84400 Bronze
Union Seal	Fluorocarbon

## DIMENSIONS



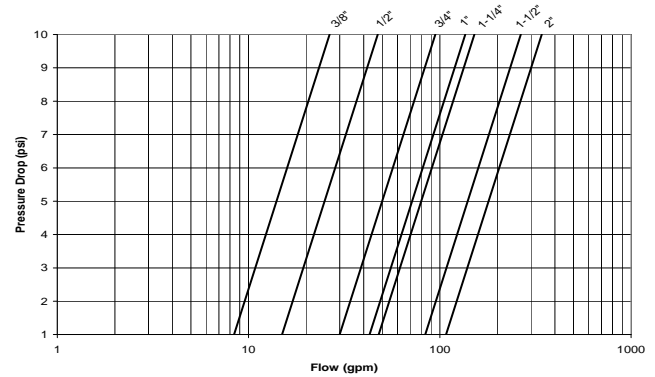
Model Number	Size (in.)	Dimensions							Wt (lbs.)
		A	B	C	D	E	F	G	
70-402	3/8"	0.37	1.81	3.09	1.75	3.87	0.50	0.37	0.85
70-403	1/2"	0.50	2.00	3.43	1.75	3.87	0.63	0.50	1.02
70-404	3/4"	0.68	2.62	4.56	2.06	4.78	0.88	0.75	1.93
70-405	1"	0.87	2.81	5.06	2.25	4.78	1.13	0.90	2.42
70-406	1 1/4"	1.00	2.87	5.18	2.62	5.50	1.38	0.96	4.11
70-407	1 1/2"	1.25	2.92	5.53	3.10	8.00	1.63	1.09	5.44
70-408	2"	1.50	3.50	6.75	3.24	8.00	2.13	1.34	7.77

## APPROVALS

- MSS SP-110; Ball Valves,
- Federal Specifications: WW-V-35C, Type: II,
- CRN: OC10908.5C



## FLOW CHARACTERISTICS



## MODELS

- 70-400 Series Standard
- 70-420 Series Adjustable Stop Lever
- 70-440 Series 316 SS Ball & Stem
- 70-450 Series Balancing Stop

## OPTIONS & SIZES

- (-03) 1 1/4" CS Stem Extension 3/8" - 2"
- (-04) 2 1/4" CS Stem Extension 3/8" - 2"
- (-10) SS Lever & Nut 3/8" - 2"
- (-14) Side Vented Ball (Uni-Directional) 3/8" - 2"
- (-15) Wheel Handle, Steel 3/8" - 2"
- (-17) Rough Chrome Plated 3/8" - 2"
- (-20) Slot Vented Ball 3/8" - 2"
- (-21) UHMWPE Trim (Non-PTFE) 3/8" - 2"
- (-27) SS Latch-Lck Lever & Nut 3/8" - 2"
- (-32) SS Tee Handle & Nut 3/8" - 2"
- (-35) VTFE Trim 3/8" - 2"
- (-48) SS Oval Handle (No Latch) & Nut 3/8" - 2"
- (-50) 2-1/4" CS Locking Stem Extension 3/8" - 2"
- (-56) MPTFE Seats and Packing 3/8" - 2"
- (-57) Oxygen Cleaned 3/8" - 2"
- (-63) NPT x Solder/Socket weld 3/8" - 2"

Conbraco Industries, Inc. 701 Matthews Mint Hill Rd. Matthews NC 28106 USA; [www.apollovalves.com](http://www.apollovalves.com); 704-841-6000

This specification is provided for reference only. Conbraco reserves the right to change any portion of this specification without notice and without incurring obligation to make such changes to Conbraco products previously or subsequently sold.