



70-300 SERIES

Single Union End Bronze Ball Valve

Job Name:	Contractor:
Job Location:	P.O. Number:
Engineer:	Representative:
Tag:	Wholesale Distributor:

DESCRIPTION

The Apollo® 70-300 Series is a standard port ball valve that combines pipe union with ball valve shut-off.

FEATURES

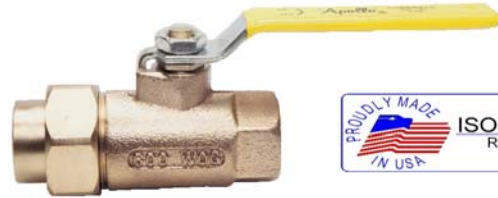
- Adjustable Packing Gland
- Blow-Out Proof Stem Design
- RPTFE Seats and Stuffing Box Ring
- Chromium Plated Ball

PERFORMANCE RATING

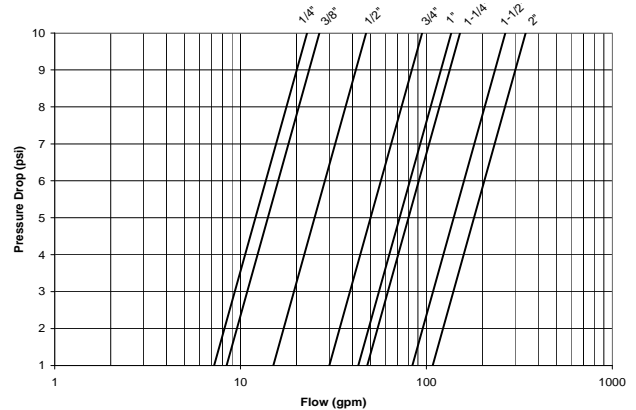
- Maximum Pressure: 600 psi CWP, 150 psi SWP
- Maximum Temperature: 500°F
- Vacuum Service to 29 in. Hg

STANDARD MATERIALS

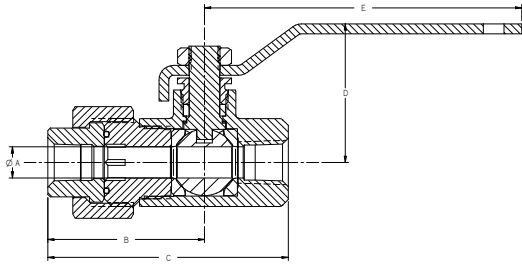
Part Name	Material
Lever and Grip	Steel, Zinc Plated w/ Vinyl
Stem Packing / Bearing	RPTFE
Ball	B16, Chrome Plated
Seat (2)	RPTFE
Retainer	B16 (1/4" to 1 1/2"), B584-C84400 (2")
Gland Nut & Stem	B16
Lever Nut	Steel, Zinc Plated
Body Seal (1 1/4" to 2")	PTFE
Body	B584-C84400
Tailpiece & Nut	B16 or B584-C84400
Union Seal	Fluorocarbon



FLOW CHARACTERISTICS



DIMENSIONS



Model Number	Size (in.)	Dimensions					Wt (lbs.)
		A	B	C	D	E	
70-301	1/4"	0.37	1.90	2.93	1.75	3.87	0.86
70-302	3/8"	0.37	1.90	2.93	1.75	3.87	0.84
70-303	1/2"	0.50	2.00	3.09	1.75	3.87	0.99
70-304	3/4"	0.68	2.46	3.96	2.12	4.87	1.91
70-305	1"	0.87	2.78	4.46	2.25	4.87	2.42
70-306	1 1/4"	1.00	2.68	4.68	2.62	5.50	4.27
70-307	1 1/2"	1.25	2.87	5.06	3.05	8.00	5.82
70-308	2"	1.50	3.25	5.59	3.24	8.00	8.55

APPROVALS

- MSS SP-110; Ball Valves,
- Federal Specifications: WW-V-35C
- CRN: OC10908.5C

MODELS

- 70-300 Series Standard
- 70-320 Series Adjustable Stop Lever
- 70-340 Series 316 SS Ball & Stem
- 70-350 Series Balancing Stop

OPTIONS & SIZES

- (-02) Stem Grounded 1/4" - 2"
- (-03) 1 1/4" CS Stem Extension 1/4" - 2"
- (-04) 2 1/4" CS Stem Extension 1/4" - 2"
- (-07) Steel Tee Handle 1/4" - 2"
- (-10) SS Lever & Nut 1/4" - 2"
- (-14) Side Vented Ball (Uni-Directional) 1/4" - 2"
- (-15) Wheel Handle, Steel 1/4" - 2"
- (-17) Rough Chrome Plated 1/4" - 2"
- (-20) Slot Vented Ball 1/4" - 2"
- (-21) UHMWPE Trim (Non-PTFE) 1/4" - 2"
- (-27) SS Latch-Lock Lever & Nut 3/4" - 2"
- (-32) SS Tee Handle & Nut 3/4" - 2"
- (-35) VTFE Trim 3/4" - 2"
- (-45) Less Lever & Nut 3/4" - 2"
- (-48) SS Oval Handle (No Latch) & Nut 3/4" - 2"
- (-50) 2-1/4" CS Locking Stem Extension 3/4" - 2"
- (-56) MPTFE Seats and Packing 3/4" - 2"
- (-57) Oxygen Cleaned 3/4" - 2"
- (-63) NPT x Solder/Socket weld 3/8" - 2"

Conbraco Industries, Inc. 701 Matthews Mint Hill Rd. Matthews NC 28106 USA; www.apollovalves.com; 704-841-6000

This specification is provided for reference only. Conbraco reserves the right to change any portion of this specification without notice and without incurring obligation to make such changes to Conbraco products previously or subsequently sold.