

SECTION M CONTENTS

CHECK VALVES

DESCRIPTION	PAGE
61-100/200 Series, Threaded Bronze, Ball Cone Check Valve	M-1
61-500/600 Series, Threaded & Solder Bronze, EPR-Seated Check Valve	M-2
62-100 Series, Threaded Stainless Steel, Ball Cone Check Valve	M-3
62-500 Series, Threaded Stainless Steel, Viton-Seated Check Valve	M-4

Apollo® 61-100/61-200 Series

Bronze Ball-Cone® Check Valves

NPT Threaded, 1/4" through 3" • Male & Female 1/4" through 2"

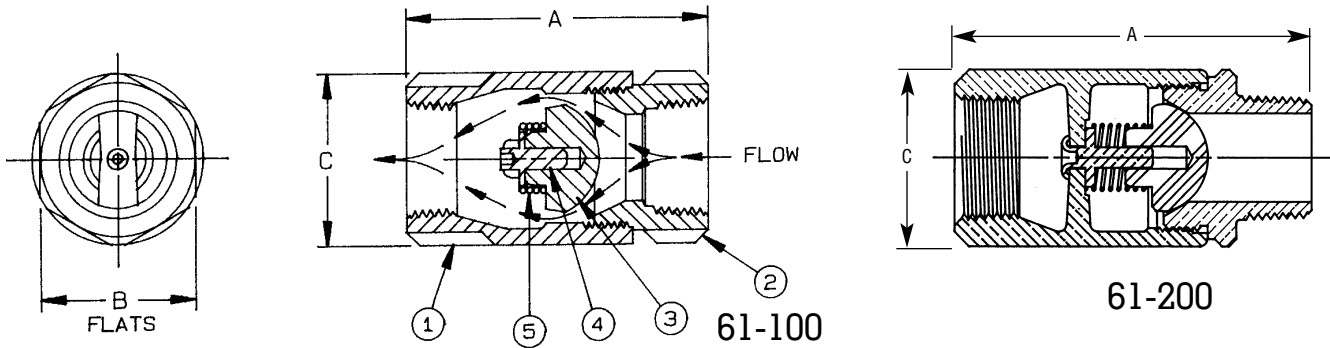
400 psig WOG, Cold Non-Shock. 125 psig Saturated Steam.

FEATURES

- U.S. Patent #4,172,465
- No radial alignment necessary
- Tight shutoff
- Optional light spring available (61-12X-Series)
- Ball-Cone check is spring-loaded for fast seating action
- Straight through flow for minimum change in velocity

STANDARD MATERIAL LIST

1. Body	ASTM B584-C84400	3. Ball Check	RPTFE
2. Tail Piece	ASTM B16 (1/4" to 1")	4. Guide	ASTM B16
	ASTM B584-C84400 (1-1/4" to 3")	5. Spring	AISI 316 SS



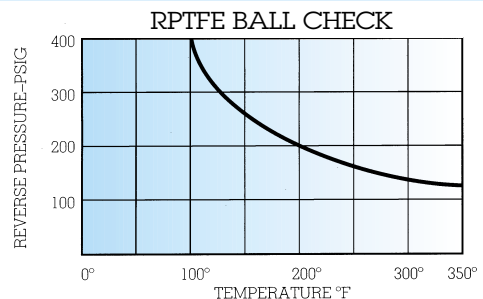
TYPE		NUMBERING SYSTEM	
1 - BRASS		6 X - XXX - XX	
CHECK		SPECIALS	
1 - BALL CONE FxF NPT		01 - STANDARD VALVE	
2 - BALL CONE MxF NPT		E05 - 5 POUND OPENING PRESSURE*	
0 - REPAIR KIT		E10 - 10 POUND OPENING PRESSURE*	
SPRING TYPE		17 - SATIN CHROME PLATED	
0 - .5 CRACKING PRESSURE		57 - OXYGEN CLEANED	
2 - .2 CRACKING PRESSURE		*1/4" to 1" Sizes Only	
SIZE			
1 - 1/4"	6 - 1-1/4"		
2 - 3/8"	7 - 1-1/2"		
3 - 1/2"	8 - 2"		
4 - 3/4"	9 - 2-1/2"		
5 - 1"	0 - 3"		

NOTE: NOT ALL COMBINATIONS AVAILABLE. CONTACT CUSTOMER SERVICE FOR VERIFICATION.

NOTE: Not recommended for use with reciprocating pumps and similar applications with repetitious vibrations. Upstream flow disturbances, which create turbulence, may result in rapid wear and premature valve failures. It is recommended that a minimum of 10 diameters of straight pipe be provided between the check valve inlet and any upstream flow disturbance such as pumps, control valves, elbows, etc. It is also recommended that a minimum of 2 diameters of straight pipe be allowed downstream of the valve outlet. Low flow rates may also cause high frequency vibrations.

Dimensional Specifications

Number	Size	A	B	C	Wt/100
61-101-01	1/4"	2.06	1.12	1.12	38
61-102-01	3/8"	2.12	1.12	1.12	38
61-103-01	1/2"	2.31	1.12	1.12	38
61-104-01	3/4"	2.87	1.37	1.50	75
61-105-01	1"	3.50	1.75	1.93	145
61-106-01	1-1/4"	4.18	2.12	2.37	275
61-107-01	1-1/2"	4.93	2.50	2.81	394
61-108-01	2"	6.00	3.00	3.68	630
61-109-01	2-1/2"	7.00	3.50	4.50	1400
61-100-01	3"	8.12	4.12	5.31	1665
61-201-01	1/4"	2.38	1.12	1.12	38
61-202-01	3/8"	2.38	1.12	1.12	38
61-203-01	1/2"	2.56	1.12	1.12	38
61-204-01	3/4"	3.12	1.37	1.50	75
61-205-01	1"	3.87	1.75	1.93	145
61-206-01	1-1/4"	4.44	2.12	2.37	275
61-207-01	1-1/2"	5.18	2.50	2.81	394
61-208-01	2"	6.50	3.00	3.68	630



Apollo® 61-500/61-600 Series

Bronze Check Valves

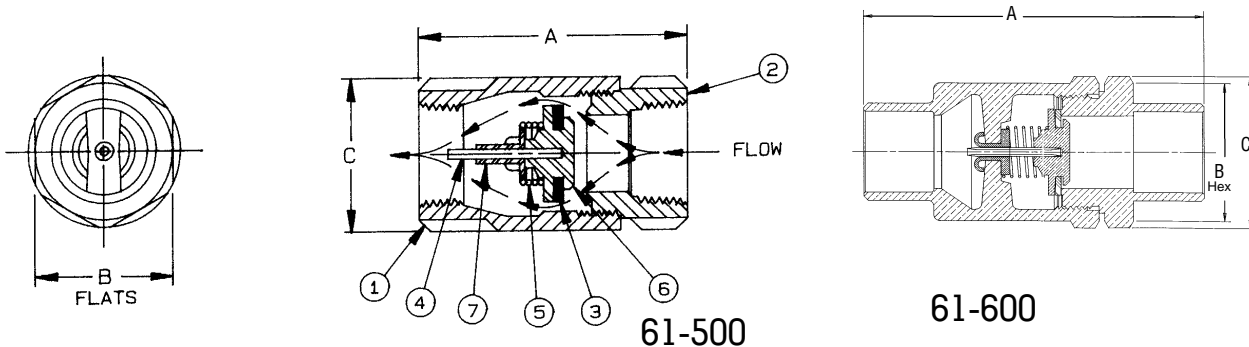
NPT Threaded, 1/4" through 2" • Sweat-End 1/2" through 1"
400 psig WOG, Cold Non-Shock. 125 psig Saturated Steam.

FEATURES

- EPR soft seat
- No radial alignment necessary
- Bubble-tight shutoff
- Optional light spring available (61-52X-Series)
- Check is spring-loaded for fast seating action
- Straight through flow for minimum change in velocity
- Spring is fully protected from flow stream

STANDARD MATERIAL LIST

1. Body	ASTM B584-C84400	5. Spring	AISI 316 SS
2. Tail Piece	ASTM B16	6. Check	ASTM B16
3. Seat	Fluorocarbon (Rubber)	7. Guide	ASTM B16
4. Guide Pin	AISI 420 SS		



NUMBERING SYSTEM		SPECIALS	
6 X - XXX - XX			
TYPE		01 - STANDARD VALVE	
1 - BRASS		B1 - NITRILE SEAT (61-500 ONLY)	
CHECK		E05 - 5 POUND OPENING PRESSURE*	
5 - EPR-SEATED FxF NPT		E10 - 10 POUND OPENING PRESSURE*	
6 - EPR-SEATED (SWEAT END)		17 - SATIN CHROME PLATED	
SPRING TYPE		57 - OXYGEN CLEANED	
0 - .5 CRACKING PRESSURE			
2 - .2 CRACKING PRESSURE			
	SIZE	*1/4" to 1" Sizes Only	
	1 - 1/4"	5 - 1"	
	2 - 3/8"	6 - 1-1/4"	
	3 - 1/2"	7 - 1-1/2"	
	4 - 3/4"	8 - 2"	

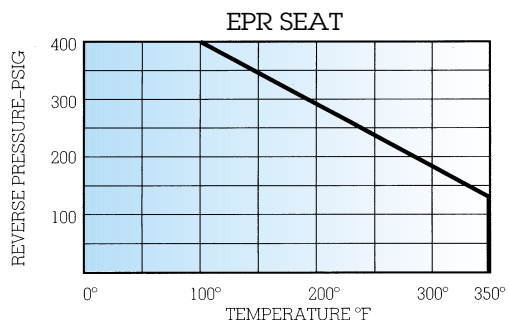
NOTE: NOT ALL COMBINATIONS AVAILABLE. CONTACT CUSTOMER SERVICE FOR VERIFICATION.

Dimensional Specifications

Number	Size	A	B	C	Wt/100
61-501-01	1/4"	2.31	1.12	1.12	38
61-502-01	3/8"	2.31	1.12	1.12	38
61-503-01	1/2"	2.31	1.12	1.12	38
61-504-01	3/4"	2.87	1.37	1.50	75
61-505-01	1"	3.50	1.75	1.93	145
61-506-01	1-1/4"	4.18	2.12	2.37	275
61-507-01	1-1/2"	4.93	2.50	2.81	394
61-508-01	2"	6.00	3.00	3.68	630
61-603-01	1/2"	2.75	1.12	1.25	38
61-604-01	3/4"	3.68	1.50	1.62	75
61-605-01	1"	4.50	1.93	2.12	145

Check compatibility of seat material.

NOTE: Not recommended for use with reciprocating pumps and similar applications with repetitious vibrations. Upstream flow disturbances, which create turbulence, may result in rapid wear and premature valve failures. It is recommended that a minimum of 10 diameters of straight pipe be provided between the check valve inlet and any upstream flow disturbance such as pumps, control valves, elbows, etc. It is also recommended that a minimum of 2 diameters of straight pipe be allowed downstream of the valve outlet. Low flow rates may also cause high frequency vibrations.



Apollo® 62-100 Series

Stainless Steel Ball-Cone® Check Valve

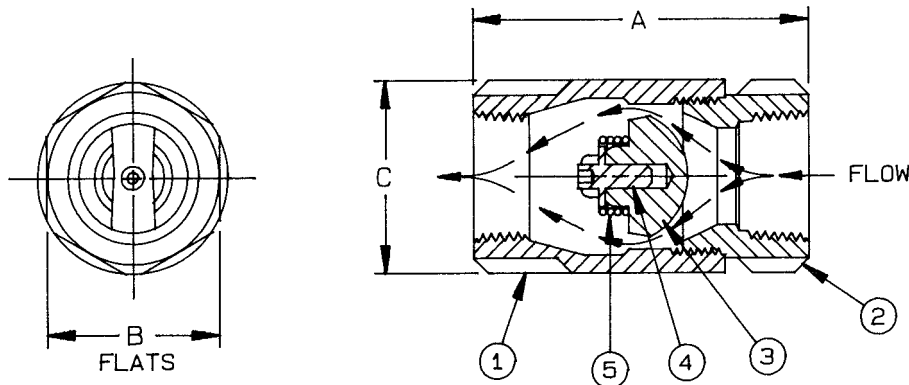
NPT Threaded, 1/4" through 2" 400 psig WOG, Cold Non-Shock. 125 psig Saturated Steam.

FEATURES

- U.S. Patent #4,172,465
- No radial alignment necessary
- Tight shutoff
- Optional light spring available (62-12X-Series)
- Ball-Cone check is spring-loaded for fast seating action
- Straight through stream lined for minimum change in velocity
- Investment cast body

STANDARD MATERIAL LIST

1. Body	ASTM A351-CF8M	4. Guide	ASTM A276-316
2. Tail Piece	ASTM A276-316 (1/4" to 1")	5. Spring	AISI 316 SS
3. Ball Check	ASTM A351-CF8M (1-1/4" to 2") RPTFE		



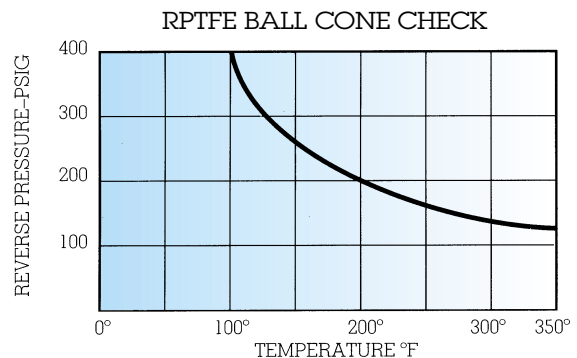
NUMBERING SYSTEM		SPECIALS	
6 X - XXX - XX		01 - STANDARD VALVE	
TYPE		E05 - 5 POUND OPENING PRESSURE*	
2 - STAINLESS STEEL		E10 - 10 POUND OPENING PRESSURE*	
CHECK		17 - SATIN CHROME PLATED	
1 - BALL CONE		57 - OXYGEN CLEANED	
0 - REPAIR KIT			
SPRING TYPE		*1/4" to 1" Sizes Only	
0 - .5 CRACKING PRESSURE			
2 - .2 CRACKING PRESSURE			
	SIZE		
	1 - 1/4" 5 - 1"		
	2 - 3/8" 6 - 1-1/4"		
	3 - 1/2" 7 - 1-1/2"		
	4 - 3/4" 8 - 2"		

Dimensional Specifications

Number	Size	A	B	C	Wt/100
62-101-01	1/4"	2.06	1.12	1.12	38
62-102-01	3/8"	2.12	1.12	1.12	38
62-103-01	1/2"	2.31	1.12	1.12	38
62-104-01	3/4"	2.87	1.37	1.50	75
62-105-01	1"	3.50	1.75	1.93	145
62-106-01	1-1/4"	4.18	2.12	2.37	237
62-107-01	1-1/2"	4.93	2.50	2.81	381
62-108-01	2"	6.00	3.00	3.68	636

NOTE: NOT ALL COMBINATIONS AVAILABLE. CONTACT CUSTOMER SERVICE FOR VERIFICATION.

NOTE: Not recommended for use with reciprocating pumps and similar applications with repetitious vibrations. Upstream flow disturbances, which create turbulence, may result in rapid wear and premature valve failures. It is recommended that a minimum of 10 diameters of straight pipe be provided between the check valve inlet and any upstream flow disturbance such as pumps, control valves, elbows, etc. It is also recommended that a minimum of 2 diameters of straight pipe be allowed downstream of the valve outlet. Low flow rates may also cause high frequency vibrations.



Apollo® 62-500 Series

Stainless Steel Check Valve

NPT Threaded, 1/4" through 1"

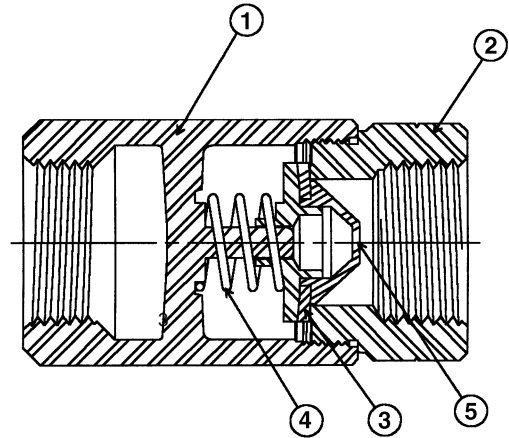
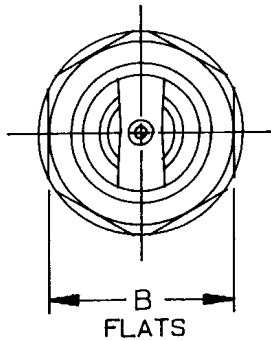
400 psig WOG, Cold Non-Shock. 125 psig Saturated Steam.

FEATURES

- Fluorocarbon soft seat
- No radial alignment necessary
- Bubble-tight shutoff
- Optional light spring available (62-52X-Series)
- Check is spring-loaded for fast seating action
- Straight through flow for minimum change in velocity
- Spring is fully protected from flow stream

STANDARD MATERIAL LIST

1. Body	ASTM A351-CF8M	4. Spring	AISI 316 SS
2. Tail Piece	ASTM A276-316	5. Check	ASTM A276-316
3. Seat	Fluorocarbon (Rubber)		



NUMBERING SYSTEM		
6 X - X X X - X X		
TYPE		SPECIALS
2 - STAINLESS STEEL		01 - STANDARD VALVE
CHECK		B1 - NITRILE SEAT (62-500 ONLY)
5 - FLUOROCARBON SEATED		E05 - 5 POUND OPENING PRESSURE*
SPRING TYPE		E10 - 10 POUND OPENING PRESSURE*
0 - .5 CRACKING PRESSURE		17 - SATIN CHROME PLATED
2 - .2 CRACKING PRESSURE		57 - OXYGEN CLEANED
	SIZE	*1/4" to 1" Sizes Only
	1 - 1/4" 4 - 3/4"	
	2 - 3/8" 5 - 1"	
	3 - 1/2"	

Dimensional Specifications

Number	Size	A	B	C	Wt/100
62-501-01	1/4"	2.31	1.12	1.12	38
62-502-01	3/8"	2.31	1.12	1.12	38
62-503-01	1/2"	2.31	1.12	1.12	38
62-504-01	3/4"	2.87	1.37	1.50	75
62-505-01	1"	3.50	1.75	1.93	145

NOTE: NOT ALL COMBINATIONS AVAILABLE. CONTACT CUSTOMER SERVICE FOR VERIFICATION.

Check compatibility of seat material.

NOTE: Not recommended for use with reciprocating pumps and similar applications with repetitious vibrations. Upstream flow disturbances, which create turbulence, may result in rapid wear and premature valve failures. It is recommended that a minimum of 10 diameters of straight pipe be provided between the check valve inlet and any upstream flow disturbance such as pumps, control valves, elbows, etc. It is also recommended that a minimum of 2 diameters of straight pipe be allowed downstream of the valve outlet. Low flow rates may also cause high frequency vibrations.

